

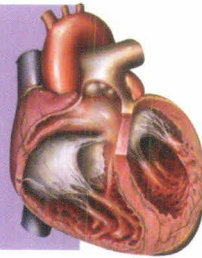


SAIFEE HOSPITAL

under the auspices of Saiffee Hospital Trust Reg. No. E-5448 (Bom)



E E C P



Enhanced
External
Counter
Pulsation

EECP is non-invasive, non-traumatic outpatient procedure, consisting of a base of 35 Treatment hours usually divided into one hour session, 5 days a week over 7 weeks.

INDICATIONS

FDA treatment indications for stable and unstable angina pectoris, acute MI, cardio genic shock and heart failure.

Angina patients complain of chest discomfort provoked by physical, emotional or mental stress.

Patients experience shortness of breath, fatigue, indigestion, faintness or pain in the chest, arm, neck or jaw.

Angina indicates that a part of the heart muscles is not receiving adequate blood and oxygen. Narrowed or blocked coronary arteries restrict blood flow to the heart and are the commonest cause of angina. Angina can be disabling as it restricts ability to work and perform activity.

EECP is an excellent option with long lasting benefits for the above conditions.

HOW EECP WORKS?

It involves the use of EECP device to sequentially inflate and deflate a series of compressive cuffs timed to inflate during diastole and deflate during systole

respectively, which are wrapped around the patients calves, lower thighs and upper thighs, Inflation & deflation of the cuffs are triggered by events in the cardiac cycle via computer interpreted ECG signals.

CLINICAL BENEFITS OF EECP

- Decreases anginal pain.
- Patients can walk further, can carry heavier weights and be more active without suffering anginal pain.
- Reduction in use of nitrates & other medications.
- Improved Quality of life. Patients can return to work, travel and exercise without fear of angina.
- Increased exercise tolerance.
- Lead a more active and confident life.

Am I a candidate for EECP treatment :

- Ask your physician to evaluate you. You may be a candidate if you :-
- Do not qualify for invasive procedures.
- Are not receiving adequate relief by taking medicines.
- Have exhausted invasive treatment without lasting relief of symptoms.
- Are not willing to undergo invasive procedures.

For details & appointments contact:

SAIFEE HOSPITAL **DEPARTMENT OF CARDIOLOGY**

Post Box No. 3771, 15 / 17 Maharshi Karve Marg, Mumbai - 400 004

Tel.: (022) 6757 0111 EXTN. 1100, 1101, Fax : (022) 6757 0777

E-mail : write@saifeehospital.com, Website : www.saifeehospital.com