



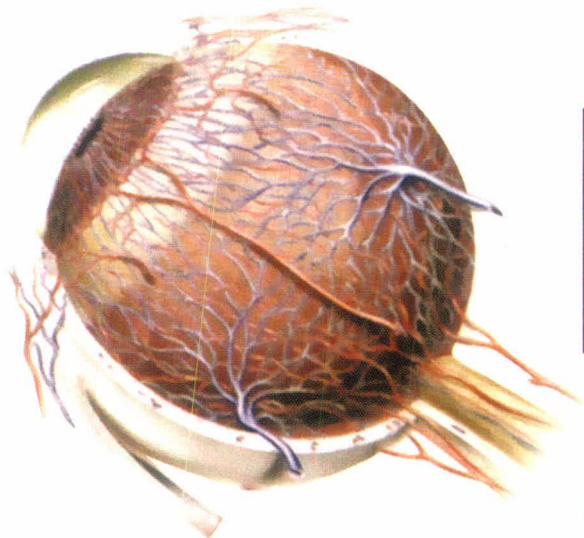
# SAIFEE HOSPITAL

under the auspices of Saifee Hospital Trust Reg. No. E-5448 (Bom)

V R S K D R

N H C S O K

**EYE  
CLINIC**



**Saifee Hospital** offers composite ophthalmic services which gives basic and advanced diagnostic medical and surgical services. These services include screening and treatment for common eye diseases, such as cataract, glaucoma, diabetes-related eye problems, prescriptions for spectacles and contact lenses.

**SERVICES AVAILABLE AT SAIFEE EYE CLINIC :**

1. Total Eye Care

a) Eye Sight Testing & prescription of glasses with Auto Refractometer as well manually.

b) Intraocular Pressure determination by Applanation/non-contact air-puff tonometer for glaucoma.

c) Indirect ophthalmoscopy and slit-lamp examination with 3 Mirror Lens and 90 D Lens.

d) Gonioscopy with Hand Held 4 Mirror Lens

2. Fundus Camera for evaluation for various retinal diseases and for evaluation of the optic disc and also for CD: ratio to follow up glaucoma patients

3. Fundus Fluorescein Angiography and Laser Photocoagulation for :

a. Diabetic Retinopathy

b. Retinal Vascular Occlusion

c. Macular Disease

d. Prophylaxis for Retinal Detachment

e. Retinopathy of prematurity (ROP)

4. Glaucoma

a. Computerized Perimetry

b. Gonioscopy

c. YAG Laser

d. Pachymetry

(to measure thickness of cornea)

5. Optical coherence tomography (OCT)  
State of the art high tech equipment for

a) Glaucoma - optic disc computerized measurements & Retinal Nerve Fiber layer analysis

b) Various Macular diseases such as early ARMD and Macular edema diagnosis

6. A-Scan Biometry:- These are used to determine preoperatively the power of lens Implant to be used during cataract surgery.

7. B Scan – Ultrasonography for various posterior segment disorders.

8. YAG laser:- Posterior Capsular Opacification (after cataract) and Narrow Angle Glaucoma.

**SURGICAL PROCEDURES:**

a) Stitche-less Cataract Surgery is performed with state - of - the - art “Legacy Phacoemulsification machine”

b) Glaucoma

c) Retinal Detachment,

d) Vitrectomy

e) Lacrimal Sac Surgery

f) Oculoplasty - Plastic Surgery

g) Corneal transplant surgery.

For further details for all consultations, procedures and surgeries,

Please Contact

**THE OPHTHALMOLOGY DEPARTMENT**

Post Box No. 3771, 15/17 Maharshi Karve Marg, Mumbai - 400 004.

Tel.: (022) 6757 0111 Extn. 356, Fax : (022) 6757 0777, E-mail : write@saifeehospital.com, Website : www.saifeehospital.com