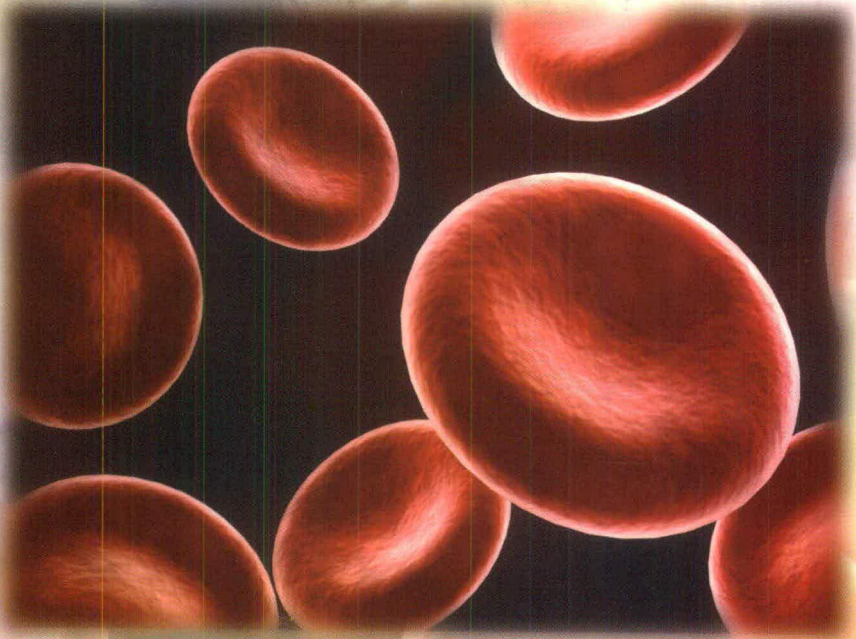




SAIFEE HOSPITAL

under the auspices of Saifee Hospital Trust Reg. No. E-5448 (Bom)



Blood Bank

your precious health in safe hands

The **Blood Bank** at **Saifee Hospital** is a modern up-to-date facility offering advanced Blood Component Therapy. It is licensed by **FDA** for preparation and supply of blood components in addition to whole blood. We are also the member of **Federation of Bombay Blood Banks**. Our Blood bank provides **24 X 7** services & **100% voluntary blood** collection with state-of-the art testing facilities that follows proper systems, to ensure good quality of blood.

Blood Component Therapy is a replacement therapy wherein, blood is fractionated into its various components & a deficient component is replaced, so that damage due to lack of that particular component is prevented. This technique facilitates in helping 3-4 persons with each unit of blood donated, by giving only the required blood component.

We provide the following facilities.

1. Whole blood
2. Packed Red Cells
3. Saline washed Red cells
4. Fresh Frozen Plasma

5. Random Platelet Concentrate
6. Cryoprecipitate
7. Leuco depleted single donor platelet by Plateletpheresis
8. Therapeutic Apheresis procedures which includes
 - Red Blood Cell exchange
 - Therapeutic plasma exchange
 - The cell reduction
 - White Blood Cells, Platelets & Red Cells Depletion

In an Apheresis, donors give only selected components – platelets, plasma, red cells, infection – fighting white cells, or combination of these, depending on the donor's blood type & the needs of the community. The remaining blood is returned back to the donor.

Our Apheresis system's unique combination of automation & customized procedure control makes it adaptable to meet the exact needs of a doctor & a patient.

How to obtain Whole Blood / Blood Components from Saifee Hospital Blood Bank

Step 1

- Confirm the availability of your requirements on telephone.
- Send fax message on your letterhead to 67570777 (Attention blood bank) mentioning your patients ABO Blood Group and Rh(D) factor and the number of units / details of components required.



Step 2

- Send the patient's blood sample in plain (5ml) and EDTA (2ml) bulbs with proper labelling
 - Whole Human Blood and Concentrated Human RBC (Packed cells)
- will be issued after doing compatibility tests.



Step 3

Hand over your original requisition letter along with the charges while collecting the requirement.

Blood Bank remains open round the clock & throughout the year.
Voluntary donors are welcome between 9.00 am to 5.00 pm.

For details please contact :

P.B.No.3771, 15/17 Maharshi Karve Marg, Mumbai - 400 004

Telephone : (022) 6757 0111 Extn. 1140/1145, Fax : (022) 6757 0777

E-mail : write@saifeehospital.com, Website : www.saifeehospital.com